



# MATROMARINE PRODUCTS

30 years of experience on the marine manufacture.

## MARINE EQUIPMENTS



### ELECTRIC SILENT SYSTEM WITH INTEGRATED INLET PUMP

CD. 6500000912 12 V.  
CD. 6500003812 12 V.  
CD. 6500003612 12 V.

CD. 6500000924 24 V.  
CD. 6500003824 24 V.  
CD. 6500003624 24 V.

### HYDRO VACUUM SYSTEM

CD. 6600000912 12 V  
CD. 6500003212 12 V.  
CD. 6500003012 12 V.

CD. 6600000924 24 V.  
CD. 6500003224 24 V.  
CD. 6500003024 24 V.

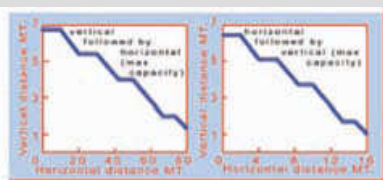


### Key factor.

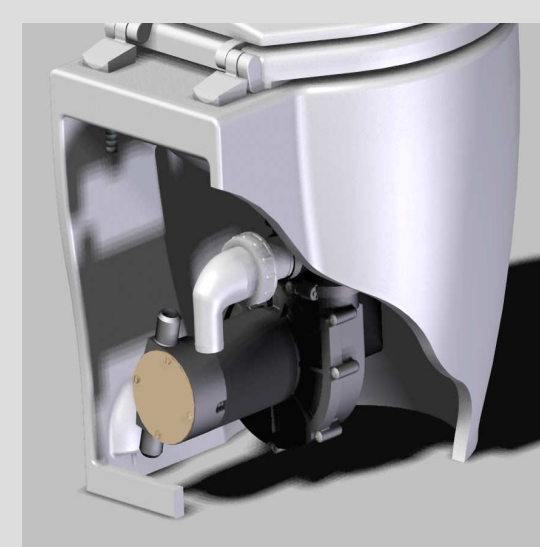
- \*Complying with ISO 8846 EN 55014
- \*360° outlet elbow rotation
- \*Bidet with incorporated fresh water mixer (OPTIONAL)

- \*Very simple installation
- \*Completely automatic washing cycle

- \*Absolute silent operation 75 db
- \*Impossibility of clogging
- \*High performance pump



The new line of fitted design bowls in vitreous china makes this toilet very comfortable and nice to be seen, just like a home toilet. The base is in anti-crash material. It can be installed either above or below the sea level. The toilet is available in the hydro-vacuum version, according to the customer's requirements. Matromarine has realized a range of toilets where performance, reliability, noise level and design have really reached the highest standards. The running cycle is completely automatic and eliminates wastewater through a high-performance pump that allows drainage of waste up to 7 m. in height and at a distance of 70 m. This hydrovacuum toilet can use an automatic water system or deck pumps installed onboard for water supply), thus increasing the holding-tank autonomy. Bowl in white porcelain. Seat and cover in wood. It is fitted with an electronic switch to regulate automatically water inlet and outlet at 2 different stages: first the bowl is filled up with clear water, and then waste is discharged by leaving the bowl empty and clean. Deluxe toilet can be installed indifferently with a centralized system or with a single system. Deluxe can also operate as a bidet: in fact, it is possible to supply it equipped with an optional bidet fitting. The water consumption is very low (about 1 – 2,5 wood with stainless steel hinges. Inlet pump or Electrovalve to be ordered apart. Available in the following 5 colours: champagne - light green - black - indigo blue - white





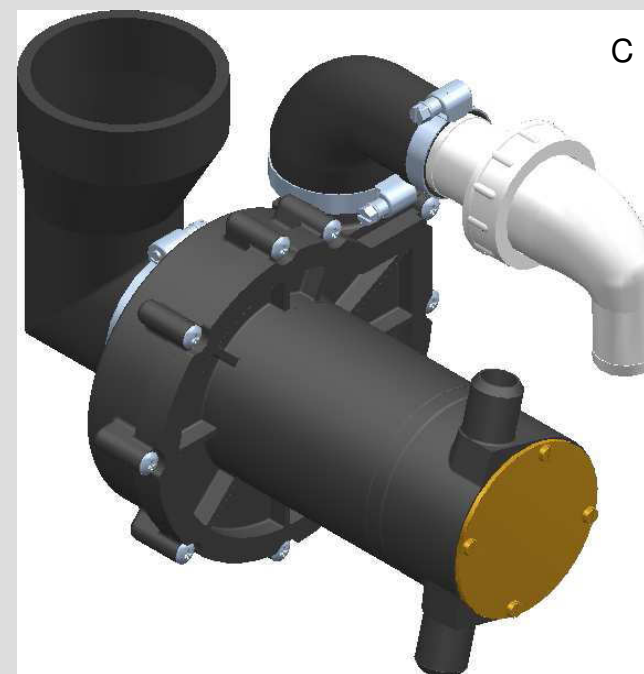
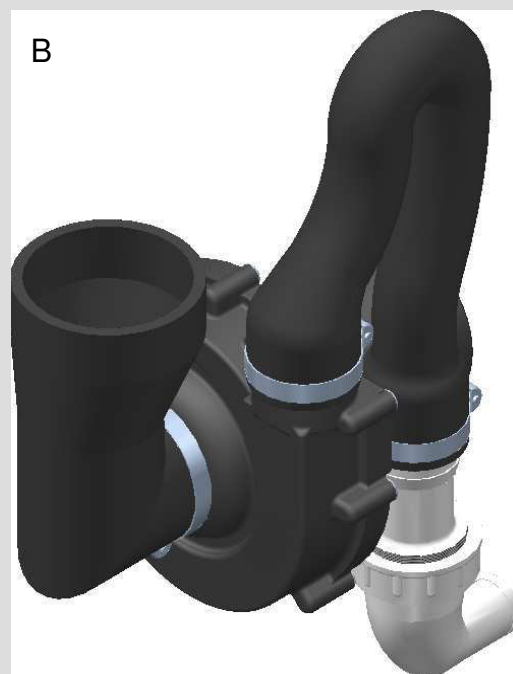
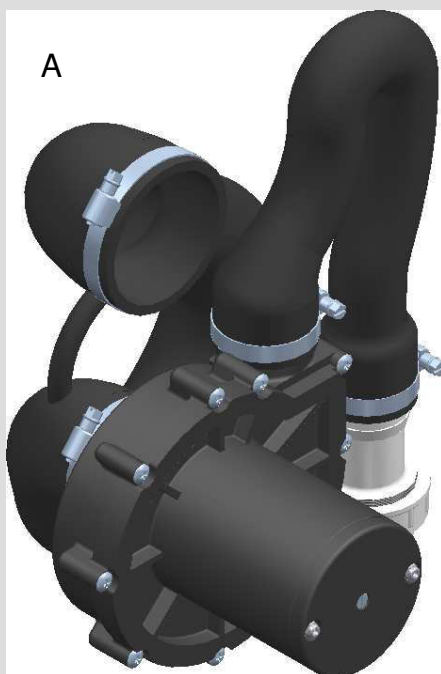
# MATROMARINE PRODUCTS

30 years of experience on the marine manufacture.

## MARINE EQUIPMENTS

### NEW DISCHARGE PUMPS MOUNTED ON OUR RANGE OF TOILETS

One key to Matromarine range of toilet effectiveness is the macerator pump. The new centrifugal grinding pump, invisible, silent and trustworthy, is the result of long and careful research, during more than 2 years development and operational feedback. It totally eliminates clogging, offers up to 7 meter delivery head, 240 liters/minute capacity and a. Residuals grinding takes place before the waste enters the pump so any improperly disposed materials are held in the grinding section until they are completely macerated avoiding in this way any possible clogging.



A) CD: 5500019812-24 FOR DELUXE AND LUXURY HYDRO VACUUM TOILETS STD AND LOW VERSION

B) CD: 5500019712-24 FOR LAGUNA HYDRO VACUUM TOILETS

C) CD: 5500019112-24 LAGUNA ELECTRIC TOILETS. CD: 55000003812-24 DELUXE STD AND LOW VERSION ELECTRIC TOILETS

**VERY IMPORTANT:** THE "LOW BEVELLED AND STANDARD BEVELLED VERSION OF THE RANGE OF TOILETS DELUXE WILL REMAIN WITH THE OTHER SYSTEM HYDRO VACUUM PUMP CODE 5600000712/24. TO ORDER SPARE PARTS ALWAYS SPECIFY PUMP TYPE



# MATROMARINE PRODUCTS

30 years of experience on the marine manufacture.

## MARINE EQUIPMENTS

### NEW LUXURY TOILET WITH SOFT CLOSE SEAT



The running cycle is completely automatic and eliminates wastewater through a high-performance pump that allows drainage of waste up to 7 m. in height and at a distance of 70 m. This hydrovacuum toilet can use an automatic water system (or deck pumps installed onboard for water supply), thus increasing the holding-tank autonomy. Bowl in white porcelain. Seat and cover in wood. It is fitted with an electronic switch to regulate automatically water inlet and outlet at 2 different stages: first the bowl is filled up with clear water, and then waste is discharged by leaving the bowl empty and clean. Luxury toilet can be installed indifferently with a centralized system or with a single system. Luxury can also operate as a bidet: in fact, it is possible to supply it equipped with an optional bidet fitting. The water consumption is very low (about 1 – 2,5 wood with stainless steel hinges. Inlet pump or Electrovalve to be ordered apart

Wooden seat and lid."soft close" with ss hinges  
Vitreous china bowl.

Water consumption: 1 - 3 litres

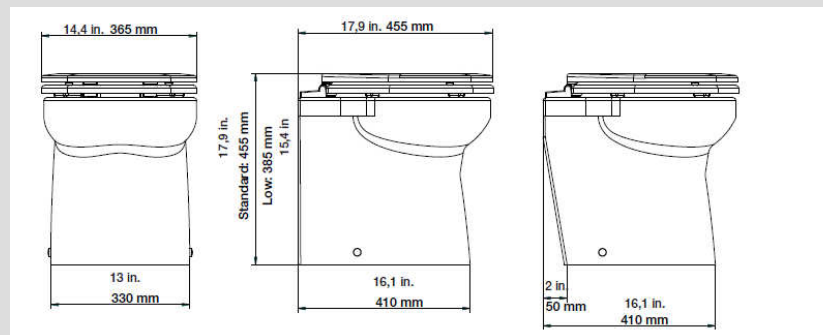
Voltage: 12/24 V. DC - Amp. Draw: 18A. – 12A.

Outlet pipe int. diameter: 38 mm (1" 1/2)

Inlet pipe int. diameter: 16 mm (3/8")

6500002012. TOIL.HYDRO VACUUM LUXURY LOW 12 V

6500002024 TOIL.HYDRO VACUUM LUXURY LOW 24 V





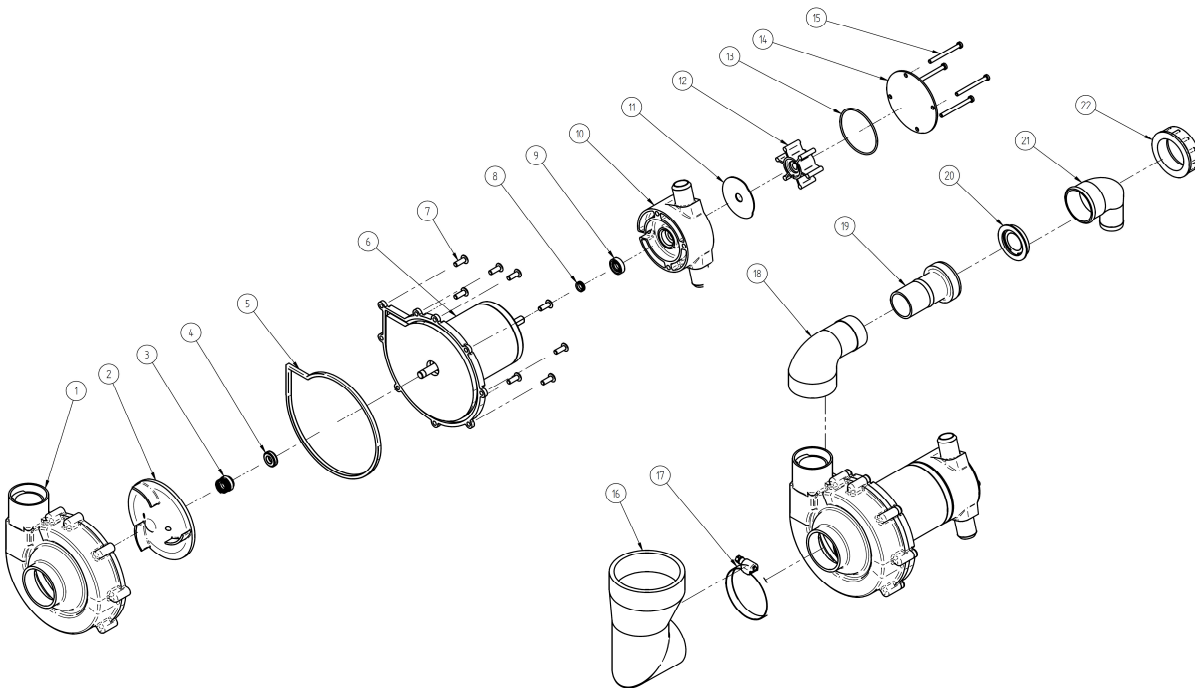


# MATROMARINE PRODUCTS

30 years of experience on the marine manufacture.

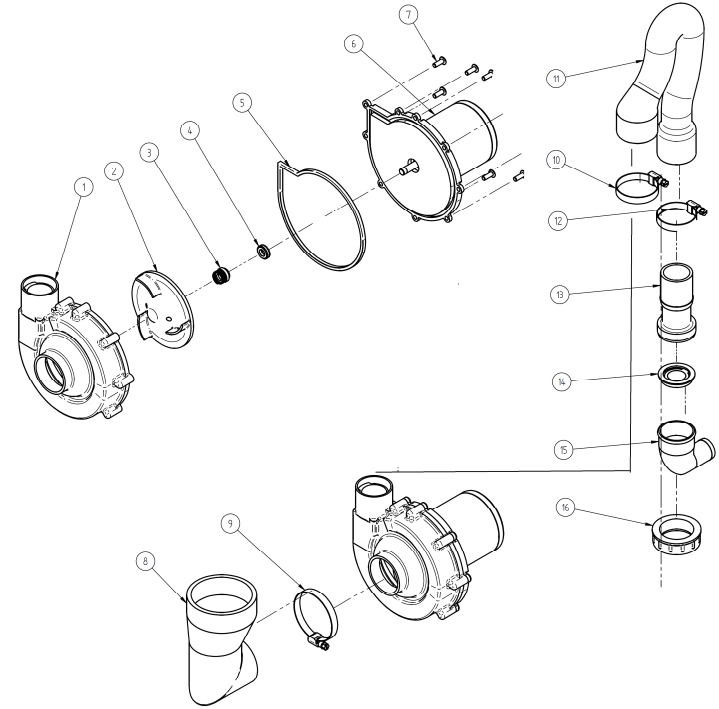
## MARINE EQUIPMENTS

### ELECTRIC SILENT PUMP FOR LAGUNA AND DELUXE TOILET



ITEM	DESCRIPTION	PART NUMBER	ITEM	DESCRIPTION	PART NUMBER	ITEM	DESCRIPTION	PART NUMBER	PART NUMBER	
1	PUMP BODY	5500019008	8	SEAL	CD.5500019010	16-17-18	HOSES/CLAMPS	CD.5500019005	Laguna vesion	
2	IMPELLER		9	LIPSEAL						
3	MECHANICAL SEAL		10	PUMP BODY		19	CONNECTION			
4	MECHANICAL SEAL		11	WEAR PLATE		20	CHECK VALVE			
5	PACKING		12	RUBBER IMPELLER		21	ELBOW			
7	SCREW	60000019112-24	13	O-RING		22	NUT			
6	MOTOR		14	COVER PLATE						
			15	SCREWS						

### HYDRO VACUUM PUMP FOR LAGUNA AND DELUXE TOILET



ITEM	DESCRIPTION	PART NUMBER	ITEM	DESCRIPTION	PART NUMBER	PART NUMBER
1	PUMP BODY	CD. 5500019008	8-11	HOSES		CD.5500019705
2	IMPELLER		9-10-12	CLAMP		PICTURE B PG 2
3-4-5	GASKETS/SEALS		13	CONNECTION	CD.5500019706	CD.5500019805
7	SCREW		14	CHECK VALVE		
6	MOTOR		15	ELBOW		
			16	NUT		PICTURE A PG 2